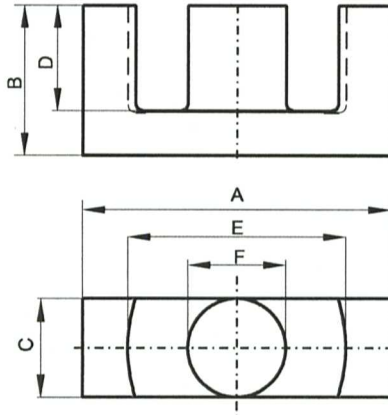


DIMENSIONS



(mm)	Nominal:	Tol. min.:	Tol. max.:
A	68.58	-2.1	+ 2.1
B	54.0	-0.4	+ 0.4
2B	108.0	-0.8	+ 0.8
C	20.0	-0.6	+ 0.6
D	41.85 Min.		
2D	83.7 Min.		
E	54.1	-1.6	+ 1.35
F	20.0	-0.5	+ 0.5
Eff. Parameters			
Ae mm²	Amin mm²	le mm	Ve mm³
334	314	231	77100

INDUCTANCE

AL value (nH/T²)	Test conditions
Nom: 3533 Min.: 2650	10 kHz, < 0.5 mT, 25 °C

MARKING

0P47054EC
PXXXXXXXXX

CORE LOSSES

P_i max	Test conditions
< 11 W/set (< 143 mW/cm ³)	100 kHz, 100 mT, 100 °C

NOTE

Spec. modifications	Previous	Revised
2014-06-06		Issued