

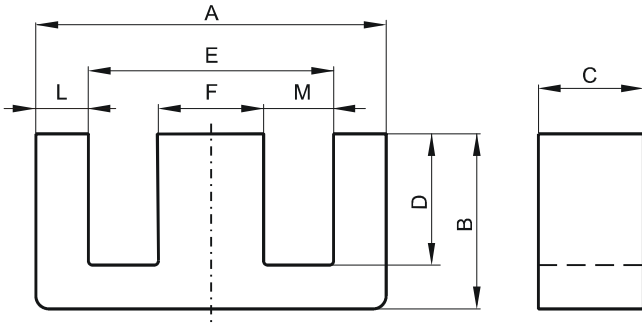


Specification for:

0P46016EC

110 Delta Drive
 Pittsburgh, PA 15238
 Phone: 412/696-1333
 Fax: 412/696-0333
 Email: magnetics@spang.com

DIMENSIONS



(mm)	Nominal:	Tol. min.:	Tol. max.:
A	59.99	-0.78	+ 0.78
B	22.3	-0.3	+ 0.3
C	15.62	-0.38	+ 0.38
D	13.8 Min.		
E	44.0 Min.		
F	15.62	-0.38	+ 0.38
L	7.7	-0.25	+ 0.25
M	14.49	-0.25	+ 0.25
Eff. Parameters			
Ae mm²	Amin mm²	le mm	Ve mm³
248.0	240.0	110.0	27200

INDUCTANCE

AL value (nH)	Test conditions
Nom: 6240 Min.: 4680	10 kHz, < 0.5 mT, 25 °C

MARKING

P EC

CORE LOSSES

P _i max	Test conditions
130 mW/cm ³ (3.54 W/set)	100 kHz, 100 mT, 100 °C

NOTE

Spec. modifications	Previous	Revised
2005-06-22	Losses: General P material	Losses: Detail as indicated