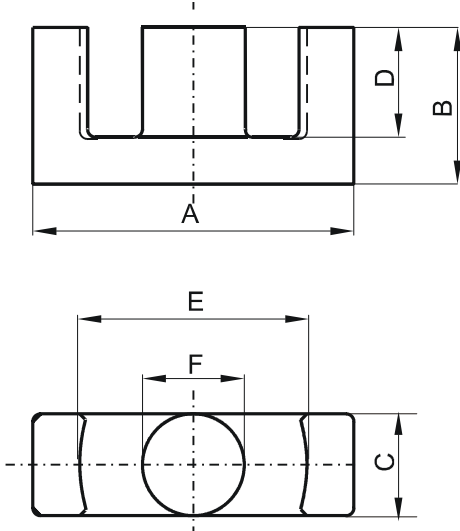


Specification for:

**0P45418EC**

110 Delta Drive  
Pittsburgh, PA 15238  
Phone: 412/696-1333  
Fax: 412/696-0333  
Email: magnetics@spang.com

**DIMENSIONS**



(mm)	Nominal:	Tol. min.:	Tol. max.:
<b>A</b>	53.5	-1.0	+ 1.0
<b>B</b>	18.3	-0.2	+ 0.2
<b>C</b>	17.95	-0.35	+ 0.35
<b>D</b>	11.1	-0.3	+ 0.3
<b>E</b>	40.65	-0.85	+ 0.85
<b>F</b>	17.9	-0.4	+ 0.4
<b>G</b>	0.0	0.0	0.0
Eff. Parameters			
Ae mm <sup>2</sup>	Amin mm <sup>2</sup>	le mm	Ve mm <sup>3</sup>
250.0	240.0	91.8	23000

**INDUCTANCE**

AL value (nH)	Test conditions
Nom: 6500 Min.: 4875	10 kHz, < 0.5 mT, 25 °C

**MARKING**

0P45418EC PXXXXX
---------------------

**CORE LOSSES**

P <sub>i</sub> max	Test conditions
126 mW/cm <sup>3</sup> (2.9 W/set)	100 kHz, 100 mT, 100 °C