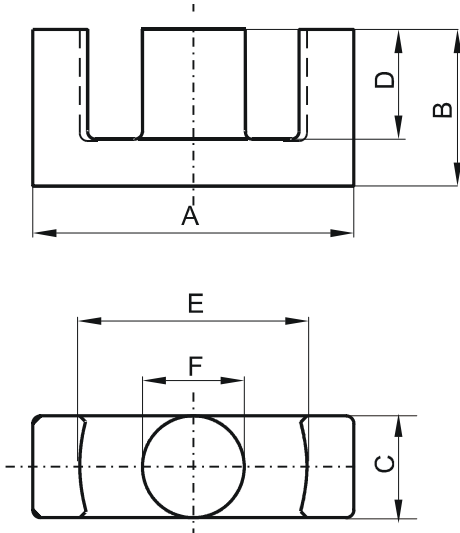


Specification for:

0P44216EC

110 Delta Drive
Pittsburgh, PA 15238
Phone: 412/696-1333
Fax: 412/696-0333
Email: magnetics@spang.com

DIMENSIONS



(mm)	Nominal:	Tol. min.:	Tol. max.:
A	42.1	-0.81	+ 0.81
B	21.6	-0.2	+ 0.2
C	14.7	-0.3	+ 0.3
D	15.6 MIN		
E	31.0	-0.58	+ 0.58
F	14.7	-0.3	+ 0.3
Eff. Parameters			
Ae mm ²	Amin mm ²	le mm	Ve mm ³
175.0	166.0	98.7	17300

INDUCTANCE

AL value (nH)	Test conditions
Nom: 4173 Min.: 3130	10 kHz, < 0.5 mT, 25 °C

MARKING

0P44216EC PXXXXX

CORE LOSSES

P _i max	Test conditions
100 mW/cm ³ (1.73 W/set)	100 kHz, 100 mT, 100 °C

NOTE

Spec. modifications	Previous	Revised
2005-06-22	A=42.1±0.81 E=31.0±0.58 LOSSES: GENERAL P MATERIAL	A=42.15±0.85 E=31.0±0.6 LOSSES: DETAIL AS INDICATED