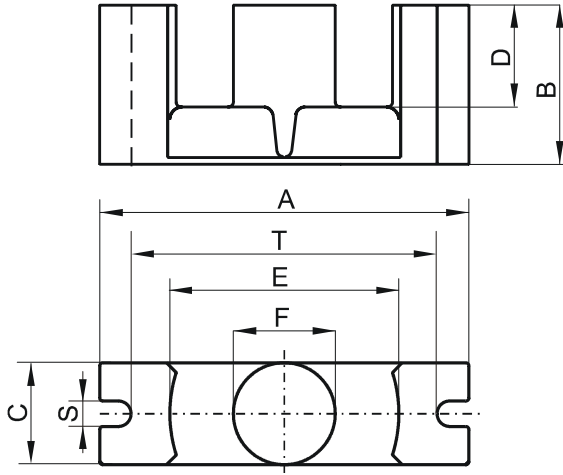


Specification for:

0P44119EC

110 Delta Drive
Pittsburgh, PA 15238
Phone: 412/696-1333
Fax: 412/696-0333
Email: magnetics@spang.com

DIMENSIONS



(mm)	Nominal:	Tol. min.:	Tol. max.:
A	40.6	-1.0	+ 1.0
B	19.5	-0.15	+ 0.15
C	11.6	-0.3	+ 0.3
D	13.9	-0.4	+ 0.4
E	27.0	-0.7	+ 0.7
F	11.6	-0.3	+ 0.3
S	3.25	-0.25	+ 0.25
T	33.6	-1.0	+ 1.0
Eff. Parameters			
Ae mm ²	Amin mm ²	le mm	Ve mm ³
121.0	106.0	89.3	10800

INDUCTANCE

AL value (nH)	Test conditions
Nom: 3200 Min.: 2400	10 kHz, < 0.5 mT, 25 °C

MARKING

P EC

CORE LOSSES

P _i max	Test conditions
130 mW/cm ³ (1.4 W/set)	100 kHz, 100 mT, 100 °C

NOTE

Spec. modifications	Previous	Revised
2005-06-16	A=41.5 Max. A=39.8 Min. T=33.58±0.89 Losses: General P material	A=41.6 Max. A=39.6 Min. T=33.6±1.0 Losses: Detail as indicated