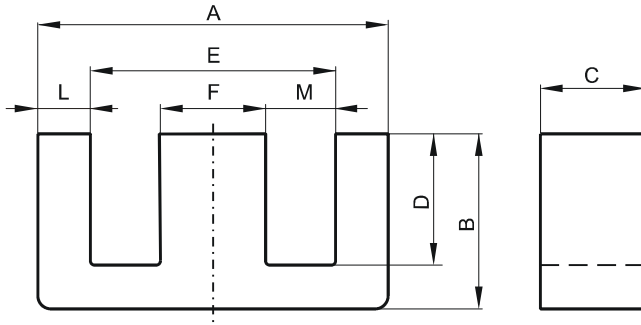


DIMENSIONS



(mm)	Nominal:	Tol. min.:	Tol. max.:
A	42.15	-0.85	+ 0.85
B	21.1	-0.2	+ 0.2
C	9.0	-0.25	+ 0.25
D	14.9 MIN		
E	29.5 MIN		
F	11.95	-0.25	+ 0.25
L	5.94	-0.13	+ 0.13
M	8.9	-0.25	+ 0.25
Eff. Parameters			
Ae mm²	Amin mm²	le mm	Ve mm³
107.0	106.0	98.4	10500

INDUCTANCE

AL value (nH)	Test conditions
Nom: 2907 Min.: 2180	10 kHz, < 0.5 mT, 25 °C

MARKING

P EC

CORE LOSSES

P _i max	Test conditions
100 mW/cm ³ (1.05 W/set)	100 kHz, 100 mT, 100 °C

NOTE

Spec. modifications	Previous	Revised
2005-06-22	A=42.8±0.64 B=21.1±0.18 D=15 MIN. E=30.4 MIN F=11.9±0.25 L=5.94±13 M=9.54±25 LOSSES:GENERAL P MATERIAL	A=42.15±0.85 B=21.1±0.2 D=14.9 MIN. E=29.5 MIN F=11.95±0.25 M=6.07±0.13 M=8.9±0.25 LOSSES: DETAIL AS INDICATED