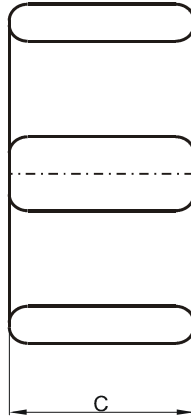
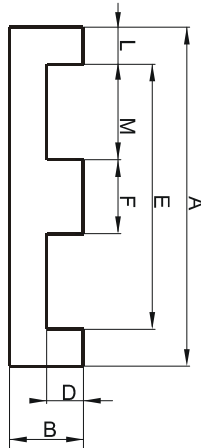


**DIMENSIONS**



(mm)	Nominal:	Tol. min.:	Tol. max.:
<b>A</b>	40.65	-0.5	+ 0.5
<b>B</b>	8.51	-0.25	+ 0.25
<b>C</b>	10.7	-0.25	+ 0.25
<b>D</b>	4.06	-0.25	+ 0.25
<b>E</b>	30.45	-0.3	+ 0.3
<b>F</b>	10.15	-0.15	+ 0.15
<b>L</b>	5.1 Ref.		
<b>M</b>	10.15 Ref.		
<b>Eff. Parameters</b>			
<b>Ae mm<sup>2</sup></b>	<b>Amin mm<sup>2</sup></b>	<b>le mm</b>	<b>Ve mm<sup>3</sup></b>
101	95.1	51.9	5220

**INDUCTANCE**

**MARKING**

AL value (nH/T <sup>2</sup> )	Test conditions	P EC
Nom: 4504 Min.: 3378	10 kHz, < 0.5 mT, 25 °C	

**CORE LOSSES**

P <sub>i</sub> max	Test conditions
115 mW/cm <sup>3</sup> (0.6 W/set)	100 kHz, 100 mT, 100 °C

**NOTE**

Spec. modifications	Previous	Revised
2005-06-22	AL=3748 Min. L=5.08±0.13 Losses: General P material	AL=3378 Min. L=5.1 Ref. Losses: Detail as indicated