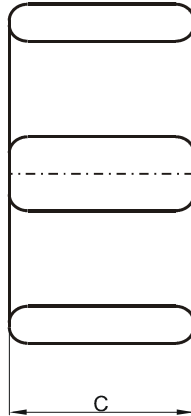
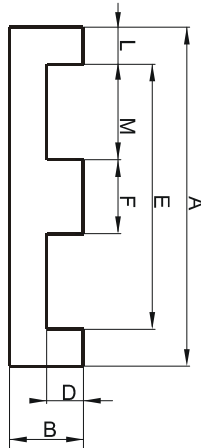


DIMENSIONS



(mm)	Nominal:	Tol. min.:	Tol. max.:
A	35.56	-0.5	+ 0.5
B	6.35	-0.13	+ 0.13
C	17.8	-0.4	+ 0.4
D	2.41 Min.		
E	27.2 Min.		
F	7.62	-0.18	+ 0.18
L	3.81	-0.13	+ 0.13
M	10.16	-0.25	+ 0.25
Eff. Parameters			
Ae mm²	Amin mm²	le mm	Ve mm³
135	135	42.4	5750

INDUCTANCE

MARKING

AL value (nH/T²)	Test conditions	
Nom: 7090 Min.: 5318	10 kHz, < 0.5 mT, 25 °C	0P43618EC PXXXXX

CORE LOSSES

P_i max	Test conditions
< 0.69 W/set (< 120 mW/cm ³)	100 kHz, 100 mT, 100 °C

NOTE

Spec. modifications	Previous	Revised
2005-06-22	AL=5640 Min. C=18.16 Max. Losses: General P material	AL=5318 Min. C=18.2 Max. Losses: Detail as indicated