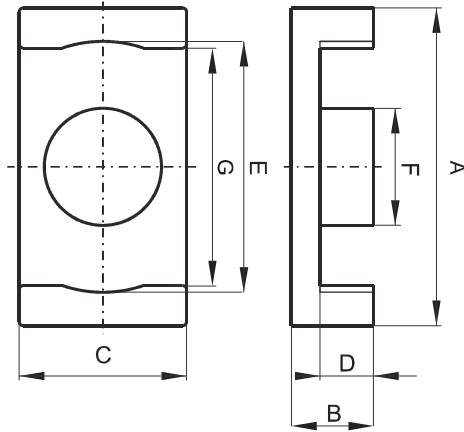


DIMENSIONS



(mm)	Nominal:	Tol. min.:	Tol. max.:
A	32.1	-0.45	+ 0.55
B	6.0	-0.13	+ 0.13
C	25.4	-0.4	+ 0.4
D	2.9	-0.25	0.0
E	27.2	-0.4	+ 0.4
F	12.4	-0.15	+ 0.15
G	27.2	-0.4	+ 0.4
Eff. Parameters			
Ae mm²	Amin mm²	le mm	Ve mm³
141.0	121.0	38.2	5400

INDUCTANCE

MARKING

AL value (nH/T²)	Test conditions	
Nom: 7350 Min: 5512	10 kHz, < 0.5 mT, 25 °C	0P43225EC PXXXXX

CORE LOSSES

P_i max	Test conditions
< 0.65 W/set (< 120 mW/cm ³)	100 kHz, 100 mT, 100 °C