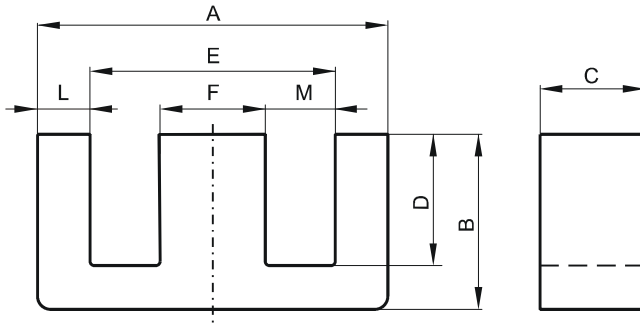


DIMENSIONS



(mm)	Nominal:	Tol. min.:	Tol. max.:
A	30.95	-0.5	+ 0.5
B	13.1	-0.25	+ 0.25
C	9.4	-0.3	+ 0.3
D	8.5 Min.		
E	21.41 Min.		
F	9.4	-0.13	+ 0.13
L	4.29 Nom.		
M	6.0 Min.		
Eff. Parameters			
Ae mm ²	Amin mm ²	le mm	Ve mm ³
83.2	83.2	61.9	5150

INDUCTANCE

AL value (nH/T ²)	Test conditions
Nom: 3147 Min.: 2360	10 kHz, < 0.5 mT, 25 °C

MARKING

P EC

CORE LOSSES

P _i max	Test conditions
111 mW/cm ³ (0.58 W/set)	100 kHz, 100 mT, 100 °C

NOTE

Spec. modifications	Previous	Revised
2005-06-22	A=30.48±0.38 B=13.4±0.25 C=9.4±0.13 Losses: General P material	A=30.95±0.50 B=13.1±0.25 C=9.4±0.3 Losses: Detail as indicated