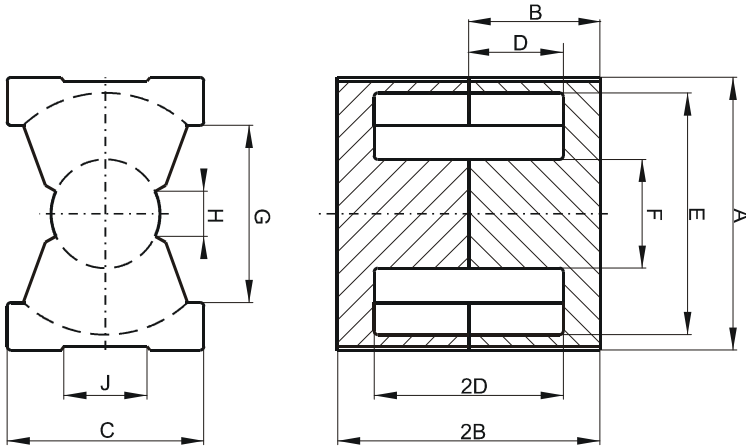


Specification for:

**0P42625UG**

110 Delta Drive  
Pittsburgh, PA 15238  
Phone: 412/696-1333  
Fax: 412/696-0333  
Email: magnetics@spang.com

**DIMENSIONS**



(mm)	Nominal:	Tol. min.:	Tol. max.:
<b>A</b>	27.3	-0.46	+ 0.46
<b>B</b>	12.35	-0.13	+ 0.13
<b>2B</b>	24.7	-0.25	+ 0.25
<b>C</b>	19.0	-0.45	+ 0.45
<b>D</b>	8.05	-0.15	+ 0.15
<b>2D</b>	16.1	-0.3	+ 0.3
<b>E</b>	22.5	-0.46	+ 0.46
<b>F</b>	12.0	-0.2	+ 0.2
<b>G</b>	15.5 Min.		
<b>H</b>	6.0 Min.		
<b>J</b>	10.5 Min.		
<b>Eff. Parameters</b>			
<b>Ae mm<sup>2</sup></b>	<b>Amin mm<sup>2</sup></b>	<b>le mm</b>	<b>Ve mm<sup>3</sup></b>
120.0	108.0	54.3	6530

**INDUCTANCE**

<b>AL value (nH)</b>	<b>Test conditions</b>
Nom: 5000 Min.: 3750	10 kHz, < 0.5 mT, 25 °C

**MARKING**

0P42625UG PXXXXX
---------------------

**CORE LOSSES**

<b>P<sub>i</sub> max</b>	<b>Test conditions</b>
127 mW/cm <sup>3</sup> (0.83 W/set)	100 kHz, 100 mT, 100 °C

**NOTE**

<b>Spec. modifications</b>	<b>Previous</b>	<b>Revised</b>
2005-06-22	A=27.71 Max. B=12.24 Min. 2B=24.49 Min. Losses: General P material	A=27.76 Max. B=12.22 Min. 2B=24.45 Min. Losses: Detail as indicated