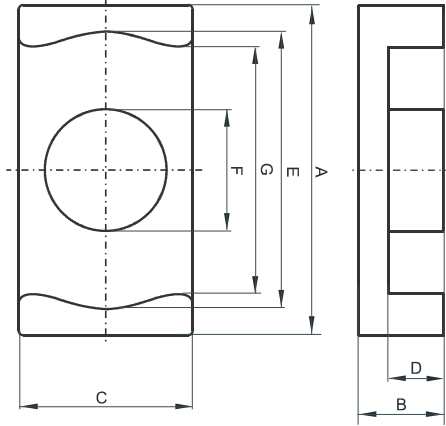


Specification for:

0P42521EC

110 Delta Drive
Pittsburgh, PA 15238
Phone: 412/696-1333
Fax: 412/696-0333
Email: magnetics@spang.com

DIMENSIONS



(mm)	Nominal:	Tol. min.:	Tol. max.:
A	25.0	-0.4	+ 0.4
B	8.0	-0.1	+ 0.1
C	18.0	-0.3	+ 0.3
D	5.15	-0.15	+ 0.15
E	22.0	-0.4	+ 0.4
F	11.0	-0.2	+ 0.2
G	15.2	-0.7	+ 0.7
Eff. Parameters			
Ae mm²	Amin mm²	le mm	Ve mm³
100.0	95.0	41.4	4145

INDUCTANCE

AL value (nH)	Test conditions
Nom: 5801 Min.: 4351	10 kHz, < 0.5 mT, 25 °C

MARKING

0P42521EC PXXXXX

CORE LOSSES

P _i max	Test conditions
121 mW/cm ³ (0.5 W/set)	100 kHz, 100 mT, 100 °C