

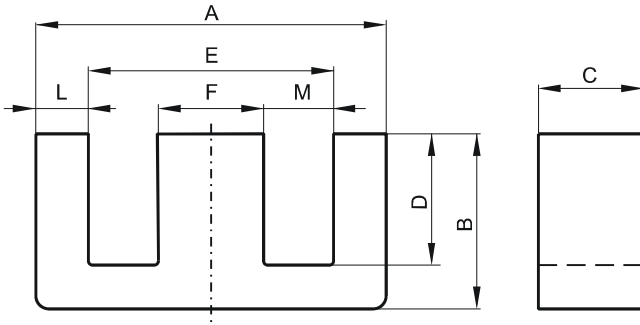


Specification for:

0P42515EC

110 Delta Drive
 Pittsburgh, PA 15238
 Phone: 412/696-1333
 Fax: 412/696-0333
 Email: magnetics@spang.com

DIMENSIONS



(mm)	Nominal:	Tol. min.:	Tol. max.:
A	25.4	-0.38	+ 0.38
B	15.9	-0.25	+ 0.25
C	6.35	-0.25	+ 0.25
D	12.6 Min.		
E	18.8 Min.		
F	6.35	-0.13	+ 0.13
L	3.12	-0.13	+ 0.13
M	6.4	-0.25	+ 0.25
Eff. Parameters			
Ae mm ²	Amin mm ²	le mm	Ve mm ³
40.1	39.7	73.5	2950

INDUCTANCE

AL value (nH)	Test conditions
Nom: 1253 Min.: 940	10 kHz, < 0.5 mT, 25 °C

MARKING

P EC

CORE LOSSES

P _i max	Test conditions
102 mW/cm ³ (0.30 W/set)	100 kHz, 100 mT, 100 °C

NOTE

Spec. modifications	Previous	Revised
2005-06-22	B=16.13 Max. Losses: General P material	B=16.15 Max. Losses: Detail as indicated