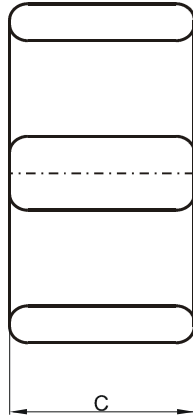
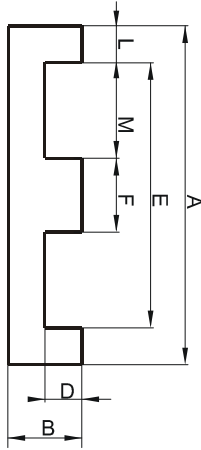


Specification for:

**0P42107EC**

110 Delta Drive  
Pittsburgh, PA 15238  
Phone: 412/696-1333  
Fax: 412/696-0333  
Email: magnetics@spang.com

**DIMENSIONS**



(mm)	Nominal:	Tol. min.:	Tol. max.:
<b>A</b>	21.8	-0.4	+ 0.4
<b>B</b>	3.91	-0.08	+ 0.08
<b>C</b>	7.8	-0.5	+ 0.5
<b>D</b>	1.73	-0.2	+ 0.2
<b>E</b>	16.8	-0.3	+ 0.3
<b>F</b>	5.0	-0.2	+ 0.2
<b>L</b>	2.5	-0.12	+ 0.12
<b>M</b>	5.89	-0.25	+ 0.25
Eff. Parameters			
<b>Ae mm<sup>2</sup></b>	<b>Amin mm<sup>2</sup></b>	<b>le mm</b>	<b>Ve mm<sup>3</sup></b>
37.1	36	25.7	960

**INDUCTANCE**

AL value (nH)	Test conditions
Nom: 3173 Min.: 2380	10 kHz, < 0.5 mT, 25 °C

**MARKING**

P EC
---------

**CORE LOSSES**

P <sub>i</sub> max	Test conditions
116 mW/cm <sup>3</sup> (0.11 W/set)	100 kHz, 100 mT, 100 °C

**NOTE**

Spec. modifications	Previous	Revised
2005-06-22	B=3.84 Min. Losses: General P material	B=3.83 Min. Losses: Detail as indicated