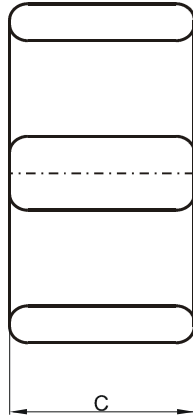
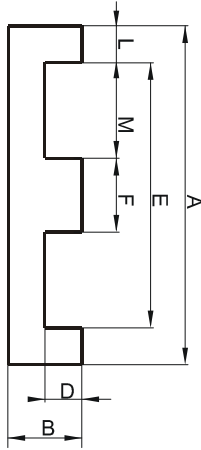


Specification for:

0P41425EC

110 Delta Drive
Pittsburgh, PA 15238
Phone: 412/696-1333
Fax: 412/696-0333
Email: magnetics@spang.com

DIMENSIONS



(mm)	Nominal:	Tol. min.:	Tol. max.:
A	14.0	-0.3	+ 0.3
B	2.5	-0.1	+ 0.1
C	5.0	-0.1	+ 0.1
D	1.0	-0.1	+ 0.1
E	11.0	-0.25	+ 0.25
F	3.0	-0.1	+ 0.1
L	1.5 Ref.		
M	4.0 Ref.		
Eff. Parameters			
Ae mm ²	Amin mm ²	le mm	Ve mm ³
14.7	14.7	16.7	244

INDUCTANCE

AL value (nH)	Test conditions
Nom: 1595 Min.: 1196	10 kHz, < 0.5 mT, 25 °C

MARKING

No marking

CORE LOSSES

P _i max	Test conditions
107 mW/cm ³ (0.026 W/set)	100 kHz, 100 mT, 100 °C

NOTE

Spec. modifications	Previous	Revised
2005-06-22	Al=1350 Min. Losses: General P material	Al=1196 Min. Losses: Detail as indicated