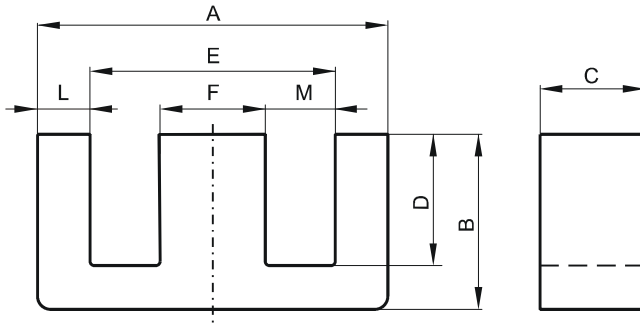


DIMENSIONS



(mm)	Nominal:	Tol. min.:	Tol. max.:
A	12.7	-0.25	+ 0.25
B	5.69	-0.18	+ 0.18
C	6.4	-0.15	+ 0.15
D	3.96 Min.		
E	9.2 Min.		
F	3.2	-0.13	+ 0.13
L	1.57 Ref.		
M	3.05 Min.		
Eff. Parameters			
Ae mm ²	Amin mm ²	le mm	Ve mm ³
20.2	20.0	27.7	558

INDUCTANCE

AL value (nH/T ²)	Test conditions
Nom: 1600 Min.: 1200	10 kHz, < 0.5 mT, 25 °C

MARKING

No marking

CORE LOSSES

P _i max	Test conditions
108 mW/cm ³ (0.06 W/set)	100 kHz, 100 mT, 100 °C

NOTE

Spec. modifications	Previous	Revised
2005-06-22	C=6.35±0.12 M=3.18±0.13 Losses: General P material	C=6.4±0.15 M=3.05 Min. Losses: Detail as indicated