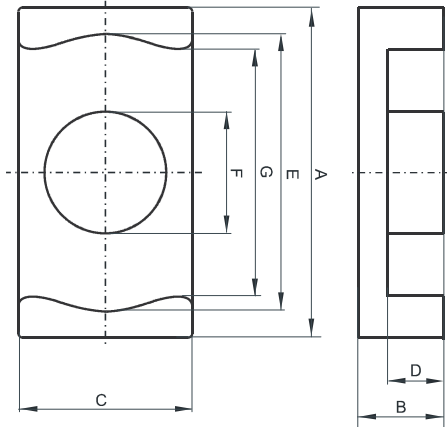


DIMENSIONS



(mm)	Nominal:	Tol. min.:	Tol. max.:
A	30.0	-0.4	+ 0.4
B	8.0	-0.15	+ 0.15
C	20.0	-0.3	+ 0.3
D	5.3	-0.2	+ 0.2
E	26.0	-0.4	+ 0.4
F	11.0	-0.2	+ 0.2
G	19.45	-0.4	+ 0.4
Eff. Parameters			
Ae mm²	Amin mm²	le mm	Ve mm³
108.0	95.0	46.0	4970

INDUCTANCE

MARKING

AL value (nH/T²)	Test conditions	No marking
2400 ± 25%	10 kHz, < 0.5 mT, 25 °C	

CORE LOSSES

P_i max	Test conditions
< 1.19 W/set (< 239 mW/cm ³)	1000 kHz, 30 mT, 100 °C