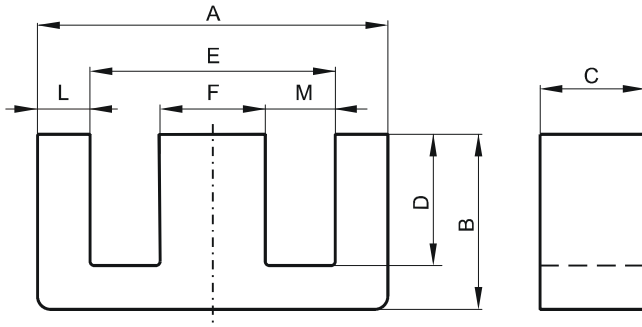


DIMENSIONS



(mm)	Nominal:	Tol. min.:	Tol. max.:
A	30.95	-0.5	+ 0.5
B	13.1	-0.25	+ 0.25
C	9.4	-0.3	+ 0.3
D	8.5 Min.		
E	21.41 Min.		
F	9.4	-0.13	+ 0.13
L	4.29 Nom.		
M	6.0 Min.		
Eff. Parameters			
Ae mm²	Amin mm²	le mm	Ve mm³
83.2	83.2	61.9	5150

INDUCTANCE

MARKING

AL value (nH/T²)	Test conditions	No marking
1400 ± 25%	10 kHz, < 0.5 mT, 25 °C	

CORE LOSSES

P_i max	Test conditions
< 1.2 W/set (< 233 mW/cm ³)	1000 kHz, 30 mT, 100 °C
< 2.1 W/set (< 408 mW/cm ³)	3000 kHz, 10 mT, 100 °C