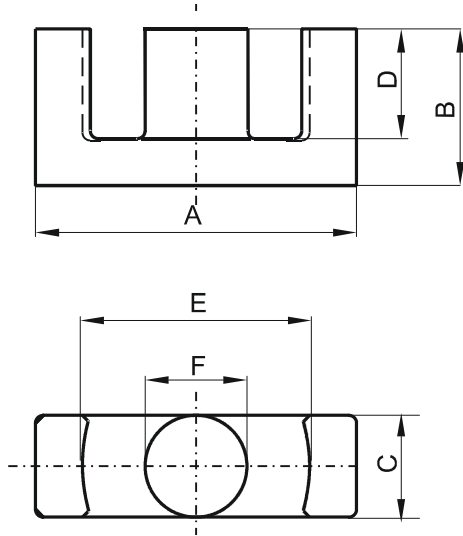


DIMENSIONS



(mm)	Nominal:	Tol. min.:	Tol. max.:
A	28.55	-0.55	+ 0.55
B	14.0	-0.2	+ 0.2
C	11.4	-0.35	+ 0.35
D	9.75	-0.4	+ 0.4
E	21.75	-0.5	+ 0.5
F	9.9	-0.25	+ 0.25
Eff. Parameters			
Ae mm ²	Amin mm ²	le mm	Ve mm ³
81.4	77.0	64.0	5260

INDUCTANCE

AL value (nH/T ²)	Test conditions
1340 ± 25%	10 kHz, < 0.5 mT, 25 °C

MARKING

No marking

CORE LOSSES

P _i max	Test conditions
< 1.21 W/set (< 230 mW/cm ³)	1000 kHz, 30 mT, 100 °C