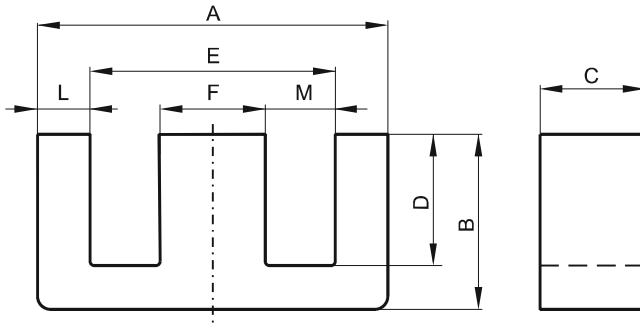


DIMENSIONS



(mm)	Nominal:	Tol. min.:	Tol. max.:
A	25.4	-0.38	+ 0.38
B	15.9	-0.25	+ 0.25
C	6.35	-0.25	+ 0.25
D	12.6 Min.		
E	18.8 Min.		
F	6.35	-0.13	+ 0.13
L	3.12	-0.13	+ 0.13
M	6.4	-0.25	+ 0.25
Eff. Parameters			
Ae mm²	Amin mm²	le mm	Ve mm³
40.1	39.7	73.5	2950

INDUCTANCE

MARKING

AL value (nH/T²)	Test conditions	No marking
540 ± 25%	10 kHz, < 0.5 mT, 25 °C	

CORE LOSSES

P_i max	Test conditions
< 0.66 W/set (< 224 mW/cm ³)	1000 kHz, 30 mT, 100 °C
< 1.2 W/set (< 407 mW/cm ³)	3000 kHz, 10 mT, 100 °C