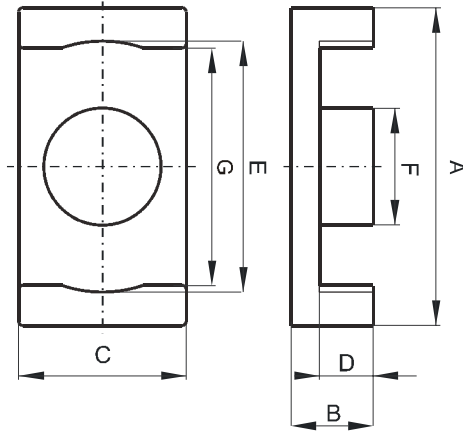


DIMENSIONS



(mm)	Nominal:	Tol. min.:	Tol. max.:
A	23.2	-0.45	+ 0.45
B	3.6	-0.1	+ 0.1
C	12.5	-0.25	+ 0.25
D	1.6	-0.1	+ 0.1
E	20.2	-0.4	+ 0.4
F	8.0	-0.2	+ 0.2
G	17.5 Min.		
Eff. Parameters			
Ae mm²	Amin mm²	le mm	Ve mm³
50.2	50.0	26.6	1340

INDUCTANCE

AL value (nH/T²)	Test conditions
1850 ± 25%	10 kHz, < 0.5 mT, 25 °C

MARKING

No marking

CORE LOSSES

P_i max	Test conditions
228 mW/cm ³ (0.31 W/set)	1000 kHz, 30 mT, 100 °C
Ref. 430 mW/cm ³ (0.58 W/set)	3000 kHz, 10 mT, 100 °C