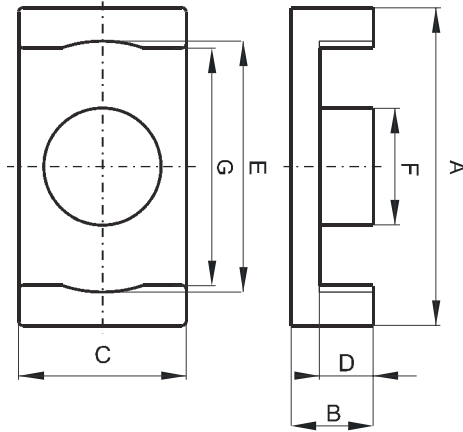


**DIMENSIONS**



(mm)	Nominal:	Tol. min.:	Tol. max.:
<b>A</b>	18.0	-0.35	+ 0.35
<b>B</b>	3.15	-0.1	+ 0.1
<b>C</b>	9.7	-0.2	+ 0.2
<b>D</b>	1.6	-0.1	+ 0.1
<b>E</b>	15.6	-0.3	+ 0.3
<b>F</b>	6.2	-0.15	+ 0.15
<b>G</b>	13.5 Min.		
<b>Eff. Parameters</b>			
<b>Ae mm<sup>2</sup></b>	<b>Amin mm<sup>2</sup></b>	<b>le mm</b>	<b>Ve mm<sup>3</sup></b>
30.2	30.1	22.1	667

**INDUCTANCE**

<b>AL value (nH/T<sup>2</sup>)</b>	<b>Test conditions</b>
1300 ± 25%	10 kHz, < 0.5 mT, 25 °C

**MARKING**

No marking

**CORE LOSSES**

<b>P<sub>i</sub> max</b>	<b>Test conditions</b>
225 mW/cm <sup>3</sup> (0.15 W/set)	1000 kHz, 30 mT, 100 °C
Ref. 400 mW/cm <sup>3</sup> (0.27 W/set)	3000 kHz, 10 mT, 100 °C