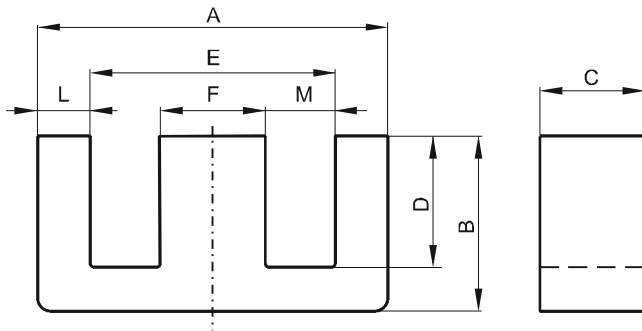


**DIMENSIONS**



(mm)	Nominal:	Tol. min.:	Tol. max.:
<b>A</b>	12.7	-0.25	+ 0.25
<b>B</b>	5.69	-0.18	+ 0.18
<b>C</b>	6.4	-0.15	+ 0.15
<b>D</b>	3.96 Min.		
<b>E</b>	9.2 Min.		
<b>F</b>	3.2	-0.13	+ 0.13
<b>L</b>	1.57 Ref.		
<b>M</b>	3.05 Min.		
<b>Eff. Parameters</b>			
<b>Ae mm<sup>2</sup></b>	<b>Amin mm<sup>2</sup></b>	<b>le mm</b>	<b>Ve mm<sup>3</sup></b>
20.2	20.0	27.7	558

**INDUCTANCE**

<b>AL value (nH/T<sup>2</sup>)</b>	<b>Test conditions</b>
700 ± 25%	10 kHz, < 0.5 mT, 25 °C

**MARKING**

No marking
------------

**CORE LOSSES**

<b>P<sub>i</sub> max</b>	<b>Test conditions</b>
228 mW/cm <sup>3</sup> (0.127 W/set)	1000 kHz, 30 mT, 100 °C
Ref. 400 mW/cm <sup>3</sup> (0.223 W/set)	3000 kHz, 10 mT, 100 °C