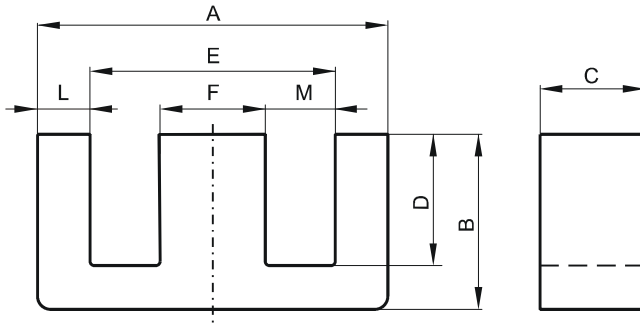


DIMENSIONS



(mm)	Nominal:	Tol. min.:	Tol. max.:
A	56.1	-1.0	+ 1.0
B	23.6	-0.25	+ 0.25
C	18.8	-0.25	+ 0.25
D	14.6	-0.13	+ 0.13
E	38.1 Min.		
F	18.8	-0.25	+ 0.25
L	9.5 Nom.		
M	9.03 Nom.		
Eff. Parameters			
Ae mm ²	Amin mm ²	le mm	Ve mm ³
337.0	337.0	107.0	36000

INDUCTANCE

MARKING

AL value (nH/T ²)	Test conditions	No marking
Nom: 14580 Min.: 10935	10 kHz, < 0.5 mT, 25 °C	

LOSS FACTOR

$\tan \delta/\mu$	Test conditions
< 82 · 10 ⁻⁶	100 kHz, < 0.25 mT, 25 °C

NOTE

Spec. modifications	Previous	Revised
2005-06-22	A=56.0 Min. B=23.82 Max. B=23.47 Min. L=9.02 Nom. M=9.4 Nom. Loss factor: General J material	A=55.1 Min. B=23.85 Max. B=23.35 Min. L=9.5 Nom. M=9.03 Nom. Loss factor: Detail as indicated