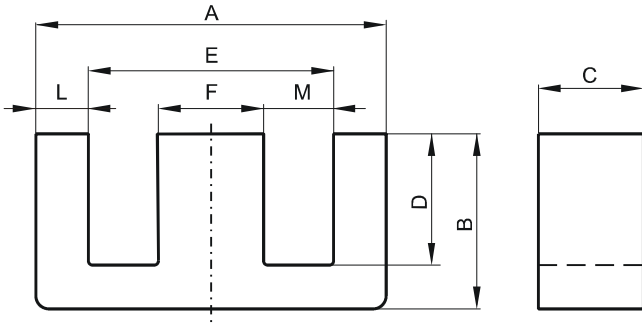


DIMENSIONS



(mm)	Nominal:	Tol. min.:	Tol. max.:
A	40.6	-0.65	+ 0.65
B	16.6	-0.2	+ 0.2
C	12.4	-0.3	+ 0.3
D	10.4 Min.		
E	28.6 Min.		
F	12.45	-0.25	+ 0.25
L	6.33 Max.		
M	7.95 Min.		
Eff. Parameters			
Ae mm²	Amin mm²	le mm	Ve mm³
149.0	142.0	77.0	11500

INDUCTANCE

AL value (nH)	Test conditions
Nom: 9800 Min.: 7350	10 kHz, < 0.5 mT, 25 °C

MARKING

No marking

LOSS FACTOR

$\tan \delta/\mu$ ($\times 10^{-6}$)	Test conditions
< 36	100 kHz, < 0.25 mT, 25 °C

NOTE

Spec. modifications	Previous	Revised
2005-06-22	A=40.5 Min. B=16.7 Max. C=12.34 Min. F=12.34 Min. Loss factor: General J material	A=39.95 Min. B=16.8 Max. C=12.1 Min. F=12.2 Min. Loss factor: Detail as indicated