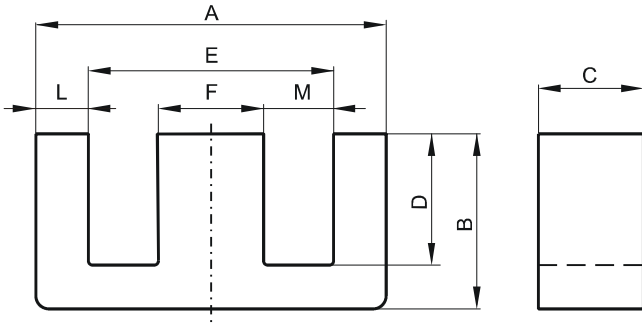


**DIMENSIONS**



(mm)	Nominal:	Tol. min.:	Tol. max.:
<b>A</b>	40.01	-0.51	+ 0.51
<b>B</b>	17.0	-0.31	+ 0.31
<b>C</b>	10.69	-0.31	+ 0.31
<b>D</b>	10.0 Min.		
<b>E</b>	27.6 Min.		
<b>F</b>	10.7	-0.31	+ 0.31
<b>L</b>	5.99	-0.25	+ 0.25
<b>M</b>	8.86 Nom.		
<b>Eff. Parameters</b>			
<b>Ae mm<sup>2</sup></b>	<b>Amin mm<sup>2</sup></b>	<b>le mm</b>	<b>Ve mm<sup>3</sup></b>
127.0	114.0	76.7	9780

**INDUCTANCE**

<b>AL value (nH)</b>	<b>Test conditions</b>
Nom: 7293 Min.: 5470	10 kHz, < 0.5 mT, 25 °C

**MARKING**

No marking
------------

**LOSS FACTOR**

<b><math>\tan \delta/\mu</math> (<math>\times 10^{-6}</math>)</b>	<b>Test conditions</b>
< 36	100 kHz, < 0.25 mT, 25 °C

**NOTE**

<b>Spec. modifications</b>	<b>Previous</b>	<b>Revised</b>
2005-06-22	M=8.66 Nom. Loss factor: General J material	M=8.86 Nom. Loss factor: Detail as indicated