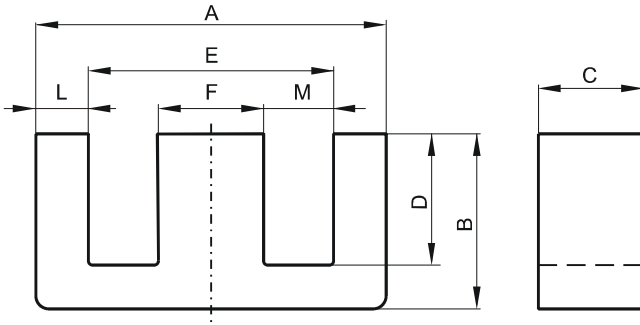


DIMENSIONS



(mm)	Nominal:	Tol. min.:	Tol. max.:
A	34.2	-0.6	+ 0.6
B	14.1	-0.15	+ 0.15
C	9.3	-0.25	+ 0.25
D	9.8	-0.13	+ 0.13
E	25.5 Min.		
F	9.3	-0.2	+ 0.2
L	4.7 Max.		
M	8.0 Min.		
Eff. Parameters			
Ae mm²	Amin mm²	le mm	Ve mm³
87.0	87.0	69.3	5590

INDUCTANCE

AL value (nH)	Test conditions
Nom: 5813 Min.: 4360	10 kHz, < 0.5 mT, 25 °C

MARKING

No marking

LOSS FACTOR

$\tan \delta/\mu$ ($\times 10^{-6}$)	Test conditions
< 30	100 kHz, < 0.25 mT, 25 °C

NOTE

Spec. modifications	Previous	Revised
2005-06-22	A=34.2 Min. B=14.0 Min. C=9.52 Max. C=9.17 Min. F=9.27 Min. Loss factor: General J material	A=33.7 Min. B=13.95 Min. C=9.55 Max. C=9.05 Min. F=9.1 Min. Loss factor: Detail as indicated