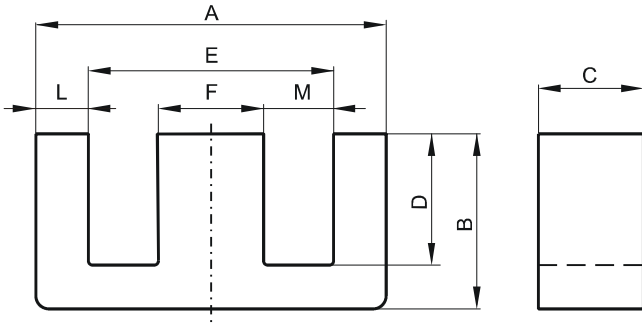


Specification for:

0J43009EC

110 Delta Drive
Pittsburgh, PA 15238
Phone: 412/696-1333
Fax: 412/696-0333
Email: magnetics@spang.com

DIMENSIONS



(mm)	Nominal:	Tol. min.:	Tol. max.:
A	30.95	-0.5	+ 0.5
B	13.1	-0.25	+ 0.25
C	9.4	-0.3	+ 0.3
D	8.5 Min.		
E	21.41 Min.		
F	9.4	-0.13	+ 0.13
L	4.29 Nom.		
M	6.0 Min.		
Eff. Parameters			
Ae mm²	Amin mm²	le mm	Ve mm³
83.2	83.2	61.9	5150

INDUCTANCE

AL value (nH)	Test conditions
Nom: 5893 Min.: 4420	10 kHz, < 0.5 mT, 25 °C

MARKING

No marking

LOSS FACTOR

$\tan \delta/\mu$ ($\times 10^{-6}$)	Test conditions
< 36	100 kHz, < 0.25 mT, 25 °C

NOTE

Spec. modifications	Previous	Revised
2005-06-22	A=30.48±0.38 B=13.4±0.25 C=9.4±0.13 Loss factor: General J material	A=30.95±0.50 B=13.1±0.25 C=9.4±0.3 Loss factor: Detail as indicated