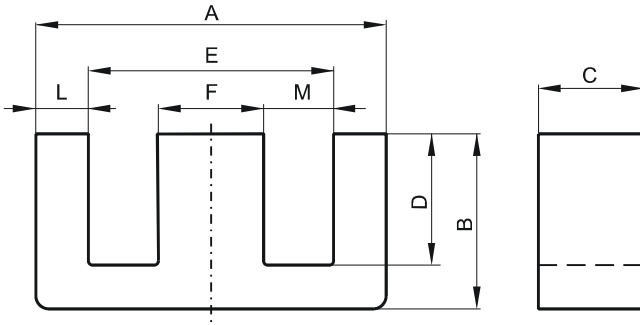


**DIMENSIONS**



(mm)	Nominal:	Tol. min.:	Tol. max.:
<b>A</b>	30.8	-1.4	0.0
<b>B</b>	15.0	-0.2	+ 0.2
<b>C</b>	7.3	-0.5	0.0
<b>D</b>	9.7	0.0	+ 0.5
<b>E</b>	19.5	0.0	+ 1.0
<b>F</b>	7.2	-0.5	0.0
<b>L</b>	5.65 Nom.		
<b>M</b>	6.15 Nom.		
Eff. Parameters			
Ae mm <sup>2</sup>	Amin mm <sup>2</sup>	le mm	Ve mm <sup>3</sup>
60.0	49.0	67.0	4000

**INDUCTANCE**

AL value (nH)	Test conditions
Nom: 3800 Min.: 2850	10 kHz, < 0.5 mT, 25 °C

**MARKING**

No marking
------------

**LOSS FACTOR**

$\tan \delta/\mu$ ( $\times 10^{-6}$ )	Test conditions
< 36	100 kHz, < 0.25 mT, 25 °C

**NOTE**

Spec. modifications	Previous	Revised
2005-06-22	L=4.65 Min. L=5.56 Max. M=6.46 Ref. Loss factor: General J material	L=5.65 Ref. M=6.15 Ref. Loss factor: Detail as indicated