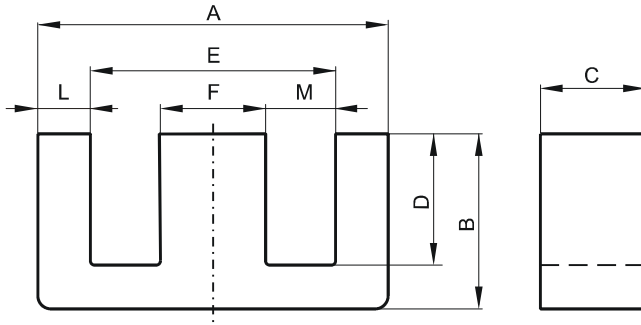


DIMENSIONS



(mm)	Nominal:	Tol. min.:	Tol. max.:
A	19.1	-0.4	+ 0.4
B	8.1	-0.13	+ 0.13
C	4.75	-0.2	+ 0.2
D	5.7	-0.13	+ 0.13
E	14.33	-0.33	+ 0.33
F	4.75	-0.2	+ 0.2
L	2.38 Nom.		
M	4.79 Nom.		
Eff. Parameters			
Ae mm ²	Amin mm ²	le mm	Ve mm ³
22.6	22.1	39.9	900

INDUCTANCE

AL value (nH)	Test conditions
Nom: 2500 Min.: 1875	10 kHz, < 0.5 mT, 25 °C

MARKING

No marking

LOSS FACTOR

$\tan \delta/\mu$ ($\times 10^{-6}$)	Test conditions
< 20	100 kHz, < 0.25 mT, 25 °C

NOTE

Spec. modifications	Previous	Revised
2005-06-16	A=19.0 Min. C=4.62 Min. C=4.93 Max. F=4.65 Min. F=4.90 Max. M=4.65 Min. Loss factor: General J material	A=18.7 Min. C=4.55 Min. C=4.95 Max. F=4.55 Min. F=4.95 Max. M=4.79 Ref. Loss factor: Detail as indicated