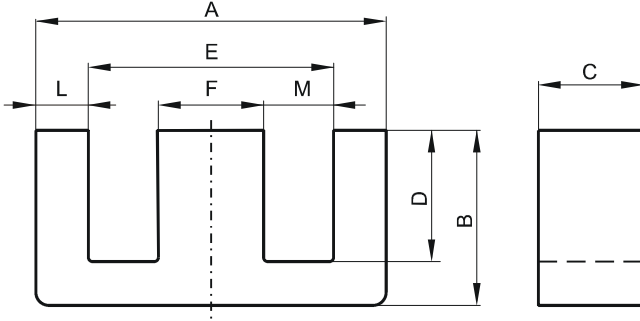


DIMENSIONS



(mm)	Nominal:	Tol. min.:	Tol. max.:
A	72.4	-0.76	+ 0.76
B	27.9	-0.33	+ 0.33
C	19.0	-0.33	+ 0.33
D	17.8 Min.		
E	52.6 Min.		
F	19.0	-0.38	+ 0.38
L	9.53	-0.38	+ 0.38
M	16.9 Min.		
Eff. Parameters			
Ae mm²	Amin mm²	le mm	Ve mm³
368.0	363.0	137.0	50300

INDUCTANCE

AL value (nH/T ²)	Test conditions
7780 ± 25%	10 kHz, < 0.5 mT, 25 °C

MARKING

0F47228EC
PXXXXX

CORE LOSSES

P _i max	Test conditions
< 10.4 W/set (< 206 mW/cm ³)	25 kHz, 200 mT, 100 °C

NOTE

Spec. modifications	Previous	Revised
2005-06-22	C=18.72 Min. E=52.63 Min. F=18.70 Min. Losses: General F material	C=18.67 Min. E=52.6 Min. F=18.62 Min. Losses: Detail as indicated