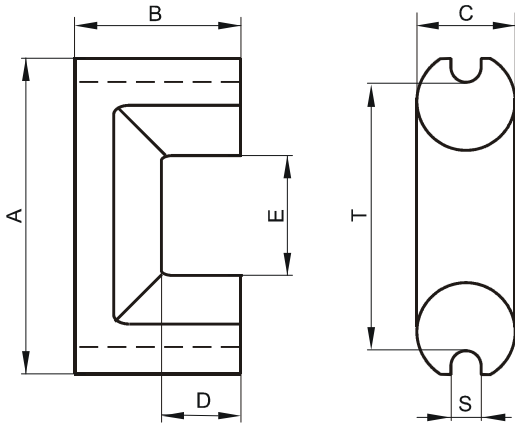


Specification for:

0F45917UC

110 Delta Drive
Pittsburgh, PA 15238
Phone: 412/696-1333
Fax: 412/696-0333
Email: magnetics@spang.com

DIMENSIONS



(mm)	Nominal:	Tol. min.:	Tol. max.:
A	59.34	-1.75	+ 1.75
B	35.8	-0.4	+ 0.4
C	17.0	-0.4	+ 0.4
D	21.5	-0.8	+ 0.8
E	26.5	-1.0	+ 1.0
S	4.5	-0.2	+ 0.2
T	50.5	-1.0	+ 1.0
Eff. Parameters			
Ae mm ²	Amin mm ²	le mm	Ve mm ³
210.0	210.0	189.0	39700

INDUCTANCE

AL value (nH)	Test conditions
3881 ± 25%	10 kHz, < 0.5 mT, 25 °C

MARKING

F UC

CORE LOSSES

P _i max	Test conditions
232 mW/cm ³ (9.2 W/set)	25 kHz, 200 mT, 100 °C