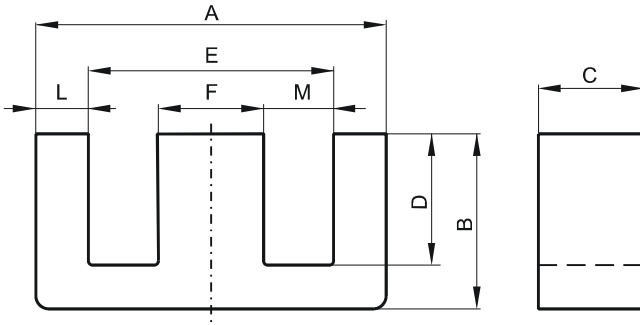


Specification for:

**0F45530EC**

110 Delta Drive  
Pittsburgh, PA 15238  
Phone: 412/696-1333  
Fax: 412/696-0333  
Email:magnetics@spang.com

**DIMENSIONS**



(mm)	Nominal:	Tol. min.:	Tol. max.:
<b>A</b>	56.2	-2.1	0.0
<b>B</b>	27.6	-0.38	+ 0.38
<b>C</b>	24.61	-0.38	+ 0.38
<b>D</b>	18.5 Min.		
<b>E</b>	37.5 Min.		
<b>F</b>	17.2	-0.5	0.0
<b>L</b>	9.35 Ref.		
<b>M</b>	10.15 Ref.		
Eff. Parameters			
Ae mm <sup>2</sup>	Amin mm <sup>2</sup>	le mm	Ve mm <sup>3</sup>
420.0	411.0	123.0	52000

**INDUCTANCE**

AL value (nH)	Test conditions
9800 ± 25%	10 kHz, < 0.5 mT, 25 °C

**MARKING**

0F45530EC PXXXXX
---------------------

**CORE LOSSES**

P <sub>i</sub> max	Test conditions
204 mW/cm <sup>3</sup> (10.6 W/set)	25 kHz, 200 mT, 100 °C

**NOTE**

Spec. modifications	Previous	Revised
2005-06-22	A=54.2 Min. A=55.5 Max. B=27.94 Max. D=18.54 Min. F=17.15 Max. L=8.38±0.38 M=10.67±0.38 Losses: General F material	A=54.1 Min. A=56.2 Max. B=27.98 Max. D=18.5 Min. F=17.2 Max. L=9.35 Ref. M=10.15 Ref. Losses: Detail as indicated