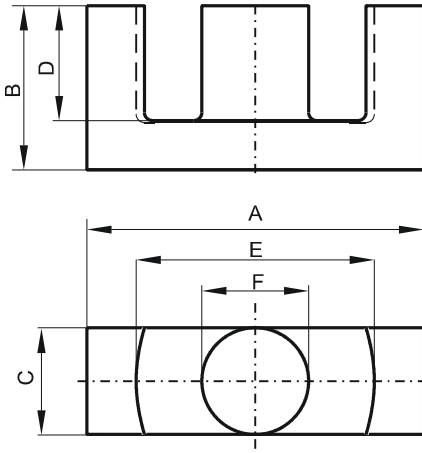


DIMENSIONS



(mm)	Nominal:	Tol. min.:	Tol. max.:
A	49.8	-2.2	0.0
B	24.7	-0.2	+ 0.2
C	16.7	-0.6	0.0
D	17.7	0.0	+ 0.8
E	36.1	0.0	+ 1.8
F	16.7	-0.6	0.0
Eff. Parameters			
Ae mm ²	Amin mm ²	le mm	Ve mm ³
211.0	209.0	114.0	24000

INDUCTANCE

AL value (nH)	Test conditions
5400 ± 25%	10 kHz, < 0.5 mT, 25 °C

MARKING

No marking

CORE LOSSES

P _i max	Test conditions
204 mW/cm ³ (4.9 W/set)	25 kHz, 200 mT, 100 °C

NOTE

Spec. modifications	Previous	Revised
2005-06-22	A=47.9 MIN. A=49.48 MAX. E=36.12 MIN. LOSSES:GENERAL F MATERIAL	A=47.6 MIN. A=49.8 MAX. E=36.1 MIN. LOSSES: DETAIL AS INDICATED