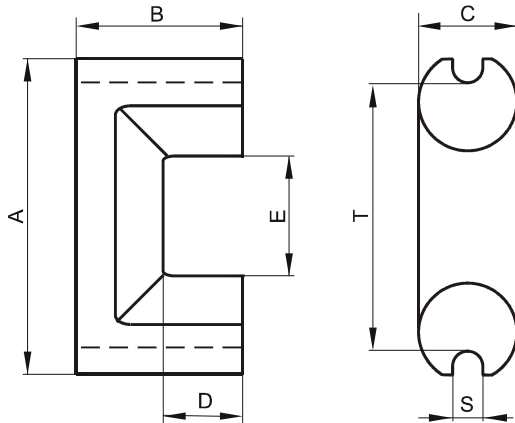


DIMENSIONS



(mm)	Nominal:	Tol. min.:	Tol. max.:
A	41.78	-0.81	+ 0.81
B	20.9	-0.12	+ 0.12
C	11.94	-0.25	+ 0.25
D	13.4 Min.		
E	18.8	-0.56	+ 0.56
S	3.18 Nom.		
T	34.66 Ref.		
Eff. Parameters			
Ae mm ²	Amin mm ²	le mm	Ve mm ³
91.1	80.5	121.2	11000

INDUCTANCE

MARKING

AL value (nH/T ²)	Test conditions	F
2130 ± 25%	10 kHz, < 0.5 mT, 25 °C	UC

CORE LOSSES

P _i max	Test conditions
209 mW/cm ³ (2.3 W/set)	25 kHz, 200 mT, 100 °C

NOTE

Spec. modifications	Previous	Revised
2005-06-22	A=41.55 Min. A=42.37 Max. C=11.95 Max. E=18.47 Min. T=35.3 Ref. Losses: General F material	A=40.97 Min. A=42.59 Max. C=12.19 Max. E=18.24 Min. T=34.66 Ref. Losses: Detail as indicated