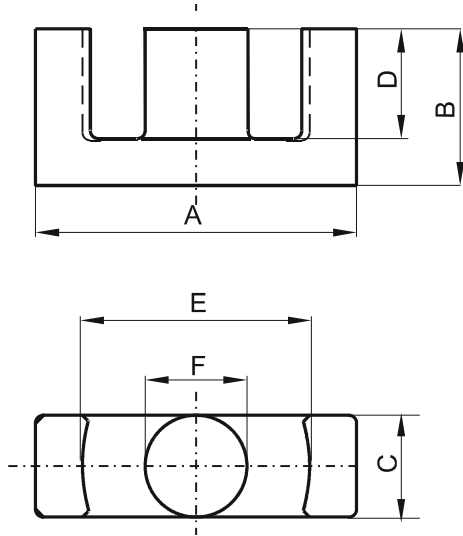


DIMENSIONS



(mm)	Nominal:	Tol. min.:	Tol. max.:
A	40.0	-0.7	+ 0.7
B	22.4	-0.2	+ 0.2
C	13.4	-0.35	+ 0.35
D	15.45	-0.35	+ 0.35
E	29.6	-0.6	+ 0.6
F	13.3	-0.25	+ 0.25

Eff. Parameters

Ae mm ²	Amin mm ²	le mm	Ve mm ³
149.0	139.0	98.0	14600

INDUCTANCE

AL value (nH/T ²)	Test conditions
4000 ± 25%	10 kHz, < 0.5 mT, 25 °C

MARKING

F EC

CORE LOSSES

P _i max	Test conditions
< 3.0 W/set (< 205 mW/cm ³)	25 kHz, 200 mT, 100 °C