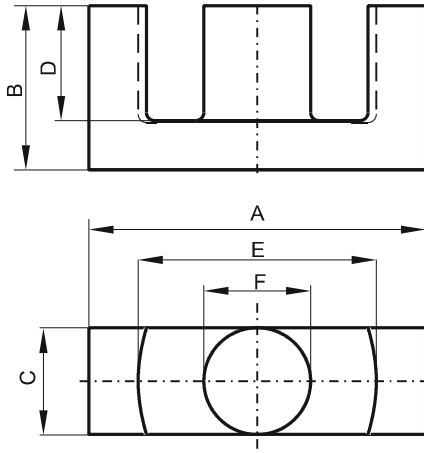


DIMENSIONS



(mm)	Nominal:	Tol. min.:	Tol. max.:
A	40.0	-1.8	0.0
B	19.8	-0.2	+ 0.2
C	12.8	-0.6	0.0
D	14.2	0.0	+ 0.8
E	29.3	0.0	+ 1.6
F	12.8	-0.6	0.0
Eff. Parameters			
Ae mm ²	Amin mm ²	le mm	Ve mm ³
125.0	123.0	92.2	11500

INDUCTANCE

AL value (nH)	Test conditions
4050 ± 25%	10 kHz, < 0.5 mT, 25 °C

MARKING

No marking

CORE LOSSES

P _i max	Test conditions
209 mW/cm ³ (2.4 W/set)	25 kHz, 200 mT, 100 °C

NOTE

Spec. modifications	Previous	Revised
2005-06-22	D=14.22 MIN. LOSSES:GENERAL F MATERIAL	D=14.2 MIN. LOSSES: DETAIL AS INDICATED