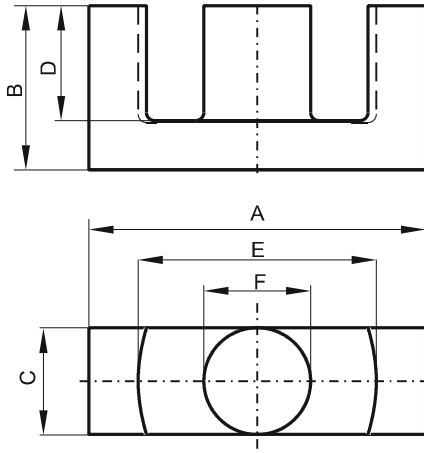


Specification for:

**0F43434EC**

110 Delta Drive  
Pittsburgh, PA 15238  
Phone: 412/696-1333  
Fax: 412/696-0333  
Email: magnetics@spang.com

**DIMENSIONS**



(mm)	Nominal:	Tol. min.:	Tol. max.:
<b>A</b>	35.0	-1.6	0.0
<b>B</b>	17.3	-0.2	+ 0.2
<b>C</b>	11.1	-0.6	0.0
<b>D</b>	11.8	0.0	+ 0.6
<b>E</b>	25.6	0.0	+ 1.4
<b>F</b>	11.1	-0.6	0.0
Eff. Parameters			
Ae mm <sup>2</sup>	Amin mm <sup>2</sup>	le mm	Ve mm <sup>3</sup>
97.1	91.6	78.6	7640

**INDUCTANCE**

AL value (nH)	Test conditions
3600 ± 25%	10 kHz, < 0.5 mT, 25 °C

**MARKING**

No marking
------------

**CORE LOSSES**

P <sub>i</sub> max	Test conditions
205 mW/cm <sup>3</sup> (1.57 W/set)	25 kHz, 200 mT, 100 °C

**NOTE**

Spec. modifications	Previous	Revised
2005-06-22	A=33.43 MIN. A=34.95 MAX E=26.97 MAX LOSSES: GENERAL F MATERIAL	A=33.4 MIN. A=35.0 MAX. E=27.0 MAX. LOSSES: DETAIL AS INDICATED