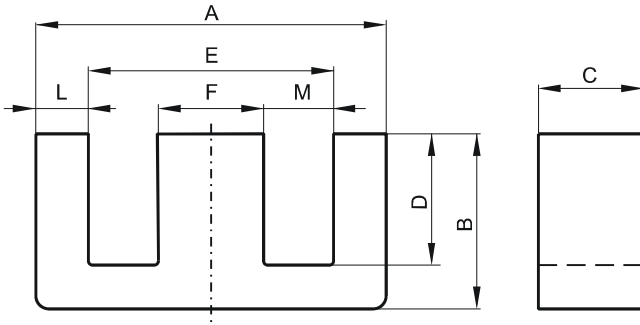


**DIMENSIONS**



(mm)	Nominal:	Tol. min.:	Tol. max.:
<b>A</b>	25.4	-0.6	+ 0.6
<b>B</b>	9.65	-0.2	+ 0.2
<b>C</b>	12.7	-0.25	+ 0.25
<b>D</b>	6.4 Min.		
<b>E</b>	18.8 Min.		
<b>F</b>	6.35	-0.25	+ 0.25
<b>L</b>	3.6 Max.		
<b>M</b>	6.1 Min.		
<b>Eff. Parameters</b>			
<b>Ae mm<sup>2</sup></b>	<b>Amin mm<sup>2</sup></b>	<b>le mm</b>	<b>Ve mm<sup>3</sup></b>
78.4	76.8	48.0	3760

**INDUCTANCE**

<b>AL value (nH)</b>	<b>Test conditions</b>
4600 ± 25%	10 kHz, < 0.5 mT, 25 °C

**MARKING**

F EC
---------

**CORE LOSSES**

<b>P<sub>i</sub> max</b>	<b>Test conditions</b>
205 mW/cm <sup>3</sup> (0.77 W/set)	25 kHz, 200 mT, 100 °C

**NOTE**

<b>Spec. modifications</b>	<b>Previous</b>	<b>Revised</b>
2005-06-22	A=25.15±0.38 B=9.53±0.18 F=6.1±0.13 M=6.22 Min. Losses: General F material	A=25.4±0.6 B=9.65±0.2 F=6.35±0.25 M=6.10 Min. Losses: Detail as indicated