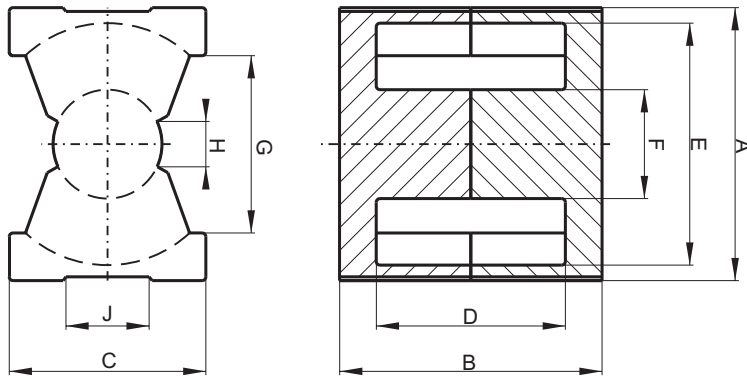


DIMENSIONS



(mm)	Nominal:	Tol.min.:	Tol.max.:
(A)	21.3	-0.4	+0.4
(B)	16.2	-0.2	+0.2
(C)	14.0	-0.4	+0.4
(D)	10.3	-0.3	+0.3
(E)	18.0	-0.4	+0.4
(F)	8.8	-0.2	+0.2
(G)	12.0 MIN.	---	---
(H)	4.0 MIN.	---	---
(J)	8.13	---	---
Eff. Parameters			
A_e mm²	A_{min} mm²	l_e mm	V_e mm³
61.9	59.1	37.6	2330

INDUCTANCE

AI value (nH)	Test conditions
Nominal: 4690±25%	10 kHz, 0.5 mT, 25°C

CORE LOSSES

P_i max	Test conditions
232 mW/cm ³ (0.54 W/set)	100 kHz, 100 mT, 100°C

MARKING

Marking: 0F42016UG PXXXXX

NOTE

Spec. modification	Previous	Revised
2005.06.22	A=21.67 MAX. A=20.85 MIN. LOSSES: GENERAL F MATERIAL	A=21.7 MAX. A=20.9 MIN. LOSSES: DETAIL AS INDICATED