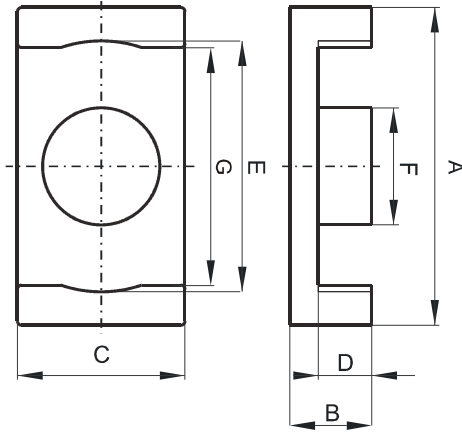


Specification for:

**0F41826EC**

110 Delta Drive  
Pittsburgh, PA 15238  
Phone: 412/696-1333  
Fax: 412/696-0333  
Email: magnetics@spang.com

**DIMENSIONS**



(mm)	Nominal:	Tol. min.:	Tol. max.:
<b>A</b>	18.0	-0.35	+ 0.35
<b>B</b>	3.15	-0.1	+ 0.1
<b>C</b>	9.7	-0.2	+ 0.2
<b>D</b>	1.6	-0.1	+ 0.1
<b>E</b>	15.6	-0.3	+ 0.3
<b>F</b>	6.2	-0.15	+ 0.15
<b>G</b>	13.5 Min.		
Eff. Parameters			
Ae mm <sup>2</sup>	Amin mm <sup>2</sup>	le mm	Ve mm <sup>3</sup>
30.2	30.1	22.1	667

**INDUCTANCE**

AL value (nH)	Test conditions
3104 ± 25%	10 kHz, < 0.5 mT, 25 °C

**MARKING**

F EC
---------

**CORE LOSSES**

P <sub>i</sub> max	Test conditions
210 mW/cm <sup>3</sup> (0.14 W/set)	25 kHz, 200 mT, 100 °C