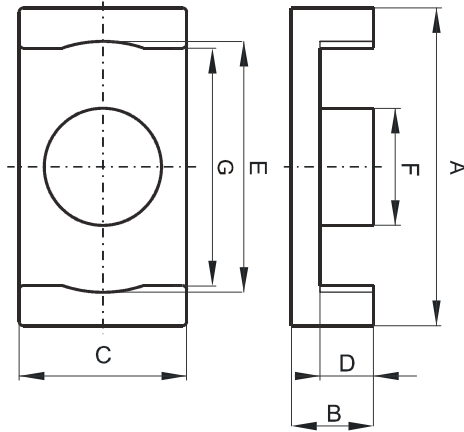


DIMENSIONS



(mm)	Nominal:	Tol. min.:	Tol. max.:
A	14.7	-0.4	0.0
B	2.95	-0.05	+ 0.05
C	6.8	-0.2	0.0
D	1.55	0.0	+ 0.2
E	11.6	0.0	+ 0.4
F	4.8	-0.2	0.0
Eff. Parameters			
Ae mm²	Amin mm²	le mm	Ve mm³
17.6	17.3	19.0	333

INDUCTANCE

MARKING

AL value (nH/T ²)	Test conditions
1850 ± 25%	10 kHz, < 0.5 mT, 25 °C

F EC

CORE LOSSES

P _i max	Test conditions
210 mW/cm ³ (0.07 W/set)	25 kHz, 200 mT, 100 °C