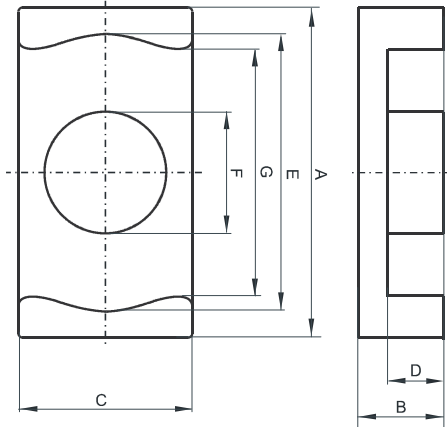


DIMENSIONS



(mm)	Nominal:	Tol. min.:	Tol. max.:
A	12.8	-0.3	+ 0.3
B	2.85	-0.08	+ 0.08
C	8.7	-0.25	+ 0.25
D	1.75	-0.13	+ 0.13
E	11.2	-0.3	+ 0.3
F	5.0	-0.15	+ 0.15
G	9.05	-0.3	+ 0.3
Eff. Parameters			
Ae mm²	Amin mm²	le mm	Ve mm³
19.9	19.2	17.5	348

INDUCTANCE

AL value (nH/T ²)	Test conditions
1950 ± 25%	10 kHz, < 0.5 mT, 25 °C

MARKING

F EC

CORE LOSSES

P _i max	Test conditions
201 mW/cm ³ (0.07 W/set)	25 kHz, 200 mT, 100 °C