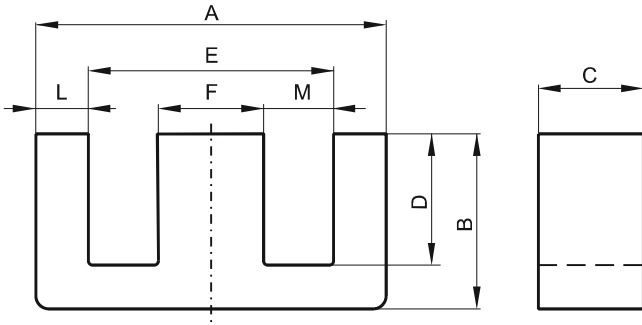


**DIMENSIONS**



(mm)	Nominal:	Tol. min.:	Tol. max.:
<b>A</b>	12.7	-0.25	+ 0.25
<b>B</b>	5.69	-0.18	+ 0.18
<b>C</b>	3.18	-0.13	+ 0.13
<b>D</b>	3.96 Min.		
<b>E</b>	9.19 Min.		
<b>F</b>	3.18	-0.08	+ 0.08
<b>L</b>	1.57 Nom.		
<b>M</b>	3.05 Min.		
Eff. Parameters			
Ae mm <sup>2</sup>	Amin mm <sup>2</sup>	le mm	Ve mm <sup>3</sup>
10.1	10.1	27.8	281

**INDUCTANCE**

AL value (nH)	Test conditions
770 ± 25%	10 kHz, < 0.5 mT, 25 °C

**MARKING**

No marking
------------

**CORE LOSSES**

P <sub>i</sub> max	Test conditions
215 mW/cm <sup>3</sup> (0.06 W/set)	25 kHz, 200 mT, 100 °C

**NOTE**

Spec. modifications	Previous	Revised
2005-06-22	Losses: General F material	Losses: Detail as indicated