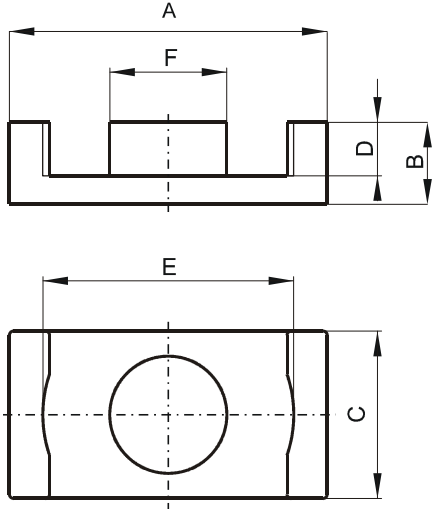


Specification for:

**0F41126EC**

110 Delta Drive  
Pittsburgh, PA 15238  
Phone: 412/696-1333  
Fax: 412/696-0333  
Email: magnetics@spang.com

**DIMENSIONS**



(mm)	Nominal:	Tol. min.:	Tol. max.:
<b>A</b>	11.0	-0.35	0.0
<b>B</b>	2.45	-0.05	+ 0.05
<b>C</b>	6.0	-0.2	0.0
<b>D</b>	1.5	0.0	+ 0.15
<b>E</b>	8.7	0.0	+ 0.3
<b>F</b>	4.25	-0.25	0.0
<b>G</b>	8.0	0.0	+ 0.2
Eff. Parameters			
Ae mm <sup>2</sup>	Amin mm <sup>2</sup>	le mm	Ve mm <sup>3</sup>
11.9	10.3	14.7	174

**INDUCTANCE**

AL value (nH)	Test conditions
1780 ± 25%	10 kHz, < 0.5 mT, 25 °C

**MARKING**

No marking
------------

**CORE LOSSES**

P <sub>i</sub> max	Test conditions
213 mW/cm <sup>3</sup> (0.037 W/set)	25 kHz, 200 mT, 100 °C