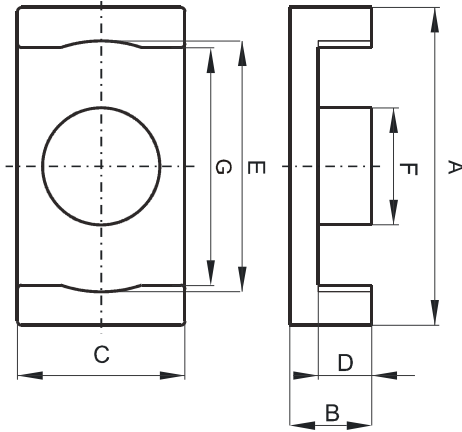


Specification for:

**0F40906EC**

110 Delta Drive  
Pittsburgh, PA 15238  
Phone: 412/696-1333  
Fax: 412/696-0333  
Email: magnetics@spang.com

**DIMENSIONS**



(mm)	Nominal:	Tol. min.:	Tol. max.:
<b>A</b>	9.5	-0.3	0.0
<b>B</b>	2.45	-0.05	+ 0.05
<b>C</b>	5.0	-0.2	0.0
<b>D</b>	1.6	0.0	+ 0.15
<b>E</b>	7.5	0.0	+ 0.4
<b>F</b>	3.5	-0.2	0.0
<b>G</b>	7.1	0.0	+ 0.35
Eff. Parameters			
Ae mm <sup>2</sup>	Amin mm <sup>2</sup>	le mm	Ve mm <sup>3</sup>
8.47	7.6	14.2	120

**INDUCTANCE**

AL value (nH)	Test conditions
1270 ± 25%	10 kHz, < 0.5 mT, 25 °C

**MARKING**

No marking

**CORE LOSSES**

P <sub>i</sub> max	Test conditions
217 mW/cm <sup>3</sup> (0.026 W/set)	25 kHz, 200 mT, 100 °C

**NOTE**

Spec. modifications	Previous	Revised
2005-06-22	E=7.75 Max. G=7.3 Max. Losses: General F material	E=7.9 Max. G=7.45 Max. Losses: Detail as indicated