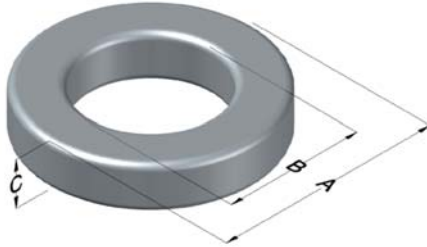




**0079868A7**

110 Delta Drive  
 Pittsburgh, PA 15238  
 NAFTA Sales: (1)800-245-3984  
 HK Sales : (852)3102-9337  
 magnetics@spang.com  
 www.mag-inc.com



Kool M $\mu$ MAX Permeability ( $\mu$ )	A <sub>L</sub> (nH/T <sup>2</sup> )	Core Marking			Coating Color
		Lot Number	Part Number	Inductance Grade	
26	30 $\pm$ 8%	XXXXXX	79868A7	N/A	Black

Dimensions	Uncoated		Coated Limits			Packaging
	(mm)	(in)	(mm)	(in)		
OD (A)	77.80	3.063	78.95	3.108	max	Cardboard cut-outs Box Qty= 45 pcs
ID (B)	49.20	1.938	48.20	1.898	min	
HT (C)	12.7	0.500	13.9	0.545	max	

Electrical Characteristics			Physical Characteristics						
Watt Loss @ 100 kHz, 100mT max (mW/cm <sup>3</sup> )	DC Bias min (A-T/cm)		Voltage Breakdown wire to wire min (V <sub>AC</sub> )	Break Strength min (kg)	Window Area W <sub>A</sub> (mm <sup>2</sup> )	Cross Section A <sub>e</sub> (mm <sup>2</sup> )	Path Length L <sub>e</sub> (mm)	Volume V <sub>e</sub> (mm <sup>3</sup> )	Weight (g)
	80%	50%							
700	106	227	2000	113	1,820	176	196	34,500	195

Winding Information					Temperature Rating	
Winding Length Per Turn				Wound Coil Dimensions (mm)		Curie Temp: 500°C
Winding Factor	(mm)	Winding Factor	(mm)	40% Winding Factor		Coating Temp (Continuous up to): 200°C
				OD	86.6	
				HT	29.1	Notes:
				Max OD	112	
				Max HT	54.3	
0%	58.4	40%	83.5	Surface Area (mm <sup>2</sup> )		
20%	70.9	45%	86.7	Unwound Core		
25%	74.1	50%	90.4	40% Winding Factor		
30%	76.3	60%	98.1			
35%	80.4	70%	107			

