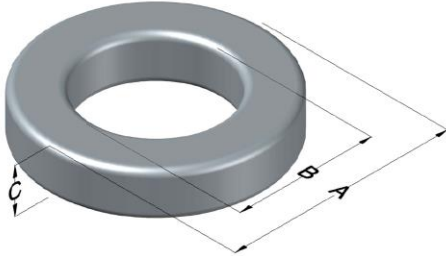




0079849A7

110 Delta Drive
 Pittsburgh, PA 15238
 NAFTA Sales: (1)800-245-3984
 HK Sales : (852)3102-9337
 magnetics@spang.com
 www.mag-inc.com



Kool M μ MAX Permeability (μ)	A _L (nH/T ²)	Core Marking			Coating Color
		Lot Number	Part Number	Inductance Grade	
19	10 \pm 8%	XXXXXX	79849A7	N/A	Black

Dimensions	Uncoated		Coated Limits			Packaging
	(mm)	(in)	(mm)	(in)		
OD (A)	20.3	0.800	21.1	0.830	max	Bulk Pack 4 bags/box Box Qty= 1600 pcs
ID (B)	12.7	0.500	12.0	0.475	min	
HT (C)	6.35	0.250	7.12	0.280	max	

Electrical Characteristics			Physical Characteristics						
Watt Loss @ 50 kHz, 100mT max(mW/cm ³)	DC Bias min (oersteds)		Voltage Breakdown wire to wire min (V _{AC})	Break Strength min (kg)	Window Area W _A (mm ²)	Cross Section A _e (mm ²)	Path Length L _e (mm)	Volume V _e (mm ³)	Weight (g)
	80%	50%							
325	185	375	1000	29.0	114	22.1	50.9	1,120	6.6

Winding Information					Temperature Rating	
Winding Length Per Turn				Wound Coil Dimensions (mm)		Curie Temp: 500°C
Winding Factor	(mm)	Winding Factor	(mm)	40% Winding Factor		Coating Temp (Continuous up to): 200°C
				OD	22.9	Notes:
				HT	10.7	
				Completely Full Window		
				Max OD	29.2	
				Max HT	17.4	
				Surface Area (mm ²)		
				Unwound Core		1,200
				40% Winding Factor		1,900
0%	23.3	40%	29.5			
20%	26.4	45%	30.5			
25%	27.2	50%	31.3			
30%	27.8	60%	33.2			
35%	28.8	70%	35.4			

