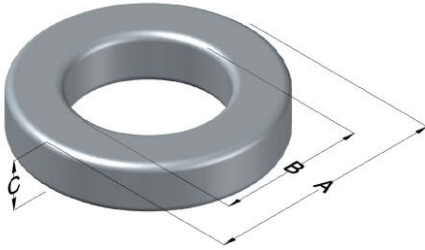




0079617A7

110 Delta Drive
 Pittsburgh, PA 15238
 NAFTA Sales: (1)800-245-3984
 HK Sales : (852)3102-9337
 magnetics@spang.com
 www.mag-inc.com



Kool M μ MAX Permeability (μ)	A _L (nH/T ²)	Core Marking			Coating Color
		Lot Number	Part Number	Inductance Grade	
60	189 \pm 8%	XXXXXX	79617A7	N/A	Black

Dimensions	Uncoated		Coated Limits			Packaging
	(mm)	(in)	(mm)	(in)		
OD (A)	62.00	2.440	62.91	2.477	max	Cardboard cut-outs Box Qty= 45 pcs
ID (B)	32.60	1.283	31.69	1.248	min	
HT (C)	25.0	0.984	25.91	1.020	max	

Electrical Characteristics			Physical Characteristics						
Watt Loss @ 100 kHz, 100mT max (mW/cm ³)	DC Bias min (A-T/cm)		Voltage Breakdown wire to wire min (V _{AC})	Break Strength min (kg)	Window Area W _A (mm ²)	Cross Section A _e (mm ²)	Path Length L _e (mm)	Volume V _e (mm ³)	Weight (g)
	80%	50%							
700	46.1	92.2	2000	113	789	360	144	51,800	350

Winding Information					Temperature Rating	
Winding Length Per Turn				Wound Coil Dimensions (mm)		Curie Temp: 500°C
Winding Factor	(mm)	Winding Factor	(mm)	40% Winding Factor		Coating Temp (Continuous up to): 200°C
				OD	75.3	
				HT	39.7	Notes:
				Max OD	81.4	
				Max HT	47.4	
0%	83.0	40%	99.5	Surface Area (mm ²)		
20%	91.3	45%	102	Unwound Core		12,000
25%	93.4	50%	104	40% Winding Factor		21,000
30%	94.9	60%	109			
35%	97.5	70%	115			

