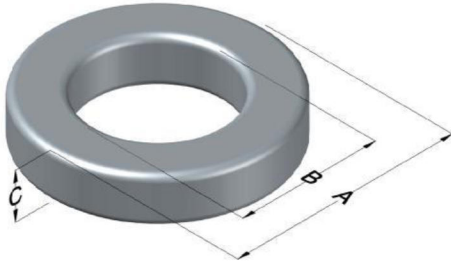




0079553A7

110 Delta Drive
 Pittsburgh, PA 15238
 NAFTA Sales: (1)800-245-3984
 HK Sales : (852)3102-9337
 magnetics@spang.com
 www.mag-inc.com



Kool M μ Permeability (μ)	A _L (nH/T ²)	Core Marking			Coating Color
		Lot Number	Part Number	Inductance Grade	
75	76 \pm 8%	XXXXXX	79553A7	N/A	Black

Dimensions					Packaging
Uncoated		Coated Limits			
	(mm)	(in)	(mm)	(in)	
OD (A)	32.79	1.291	33.66	1.325	
ID (B)	20.09	0.791	19.46	0.766	
HT (C)	10.67	0.420	11.43	0.450	

Electrical Characteristics			Physical Characteristics						
Watt Loss @ 100kHz, 100mT (max, mW/cm ³)	DC Bias min (Oersteds)		Voltage Breakdown wire-to-wire min (V _{AC})	Break Strength (min, kg)	Window Area, W _A (mm ²)	Cross Section, A _e (mm ²)	Path Length, L _e (mm)	Volume V _e (mm ³)	Weight (g)
	80%	50%							
750	40.0	85.0	3000	79.0	297	65.6	81.4	5340	44.7

Winding Information					Temperature Rating		
Winding Length per Turn			Wound Coil Dimensions (mm)			Curie Temp (°C):	500 °C
Winding Factor	(mm)	Winding Factor	(mm)	40% Winding Factor	OD	36.8	
					0%	37.1	40%
20%	42.1	45%	48.5	Completely Full Window	Max OD	46.7	
25%	43.2	50%	50.0		Max HT	28.0	
30%	44.4	60%	52.8	Surface Area (mm ²)			
35%	45.9	70%	56.3	Unwound Core:	3,100		
				40% Wound:	4,900		

Typical DC Bias Performance

